

See Online Product News for more products and services featured over the past several years in a searchable data base.

## PRODUCT NEWS

### Model Printing Service

3D.Ortho, a new digital division of DynaFlex, is fully integrated with the company's laboratory services, offering digital model storage and high-speed rapid prototyping model printing for appliance fabrication. DynaFlex is also an authorized seller of 3Shape's R700 scanner, which uses cutting-edge scanning technology to convert an impression or plaster model into a high-quality digital image in about two minutes, according to the company.



For additional information, contact DynaFlex, 10403 International Plaza Drive, St. Ann, MO 63074. (866) 346-5665; [www.dynaflex.com](http://www.dynaflex.com).

### Low-Dose Scanner

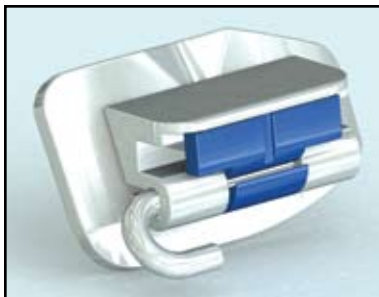
J. Morita's Veraviewepocs and Accuitomo cone-beam scanners are now automatically equipped with a dose-reduction feature that lowers radiation dosage by 30-40% in all fields of view without diminishing image clarity. According to the company, re-engineering has optimized x-ray intensity, reducing the overall level of emissions while producing sharper soft-tissue images with fewer artifacts.



For additional information, contact J. Morita USA, Inc., 9 Mason Lane, Irvine, CA 92618. (888) JMORITA; [www.jmoritausa.com](http://www.jmoritausa.com).

### Reconvertible Molar Tube

The SPEED Convertible Tube is a low-profile, self-ligating attachment for lower first molars that can be repeatedly opened and closed throughout treatment, according to the manufacturer. A flexible yet robust nickel titanium Micro-Latch is designed to open with any standard instrument and to close easily and securely with an audible click, using just a finger or thumb.



For information, contact Strite Industries, 298 Shepherd Ave., Cambridge, Ontario, N3C 1V1 Canada. (800) 26-SPEED; [www.speedsystem.com](http://www.speedsystem.com).

### Intraoral Mirrors

The vaporized-glass surface coating of Great Lakes' new Doctorseyes Ultrabright Dental Mirror provides optimal reflectivity and true color representation while preventing ghost reflections, according to the company. Both the glass and the removable silicone grip handles are autoclavable, and the mirrors are designed to be resistant to most acids, alkalines, and chemicals. Lingual, buccal, and various occlusal versions are available.



For more information, contact Great Lakes Orthodontics, 200 Cooper Ave., Tonawanda, NY 14150. (800) 828-7626; [www.greatlakesortho.com](http://www.greatlakesortho.com).

*(continued on next page)*

**iPhone App**

Information in a practice's topsOrtho management and imaging system can now be accessed via iPhone and iPod Touch. The topsEcho app provides real-time patient information, high-resolution images, radiographs, appointments, ledgers, schedules, referrer information, treatment notes, and more, according to the developer. The new app requires version 4.0 or newer and current topsOrtho and topsEcho contracts.

For more information, contact tops Software, 2621 Sandy Plains Road, Marietta, GA 30066. (888) 770-2488; [www.topsortho.com](http://www.topsortho.com).

**Welder Features**

A new version of the Yates-Motloid orthodontic welder offers several new features to combine welding, soldering, and annealing steps in a single unit. The Ortho Welder II's larger transformer supplies about 50% more welding power, according to the company, and a new combination jaw allows welding without the use of wax or putty. Other features include nine pulse-time settings, remote weld/solder leads with tips, and a half-inch platform cutout to accommodate larger models. The welder is available in 110V and 220V models.



For more information, contact Yates-Motloid, Inc., 300 N. Oakley Blvd., Chicago, IL 60607. (800) 860-0473; [www.yates-motloid.com](http://www.yates-motloid.com).

**PRODUCT NEWS is presented as a service to the reader and in no way implies endorsement by JCO.**



**Contact Us**

**Journal of Clinical Orthodontics**

1828 Pearl St.  
Boulder, CO 80302 USA  
Phone: (303) 443-1720 Fax: (303) 443-9356  
[www.jco-online.com](http://www.jco-online.com)

**Editor:** Robert G. Keim, DDS, EdD, PhD [editor@jco-online.com](mailto:editor@jco-online.com)

**Executive Editor:** David S. Vogels III [dvogels@jco-online.com](mailto:dvogels@jco-online.com)

**Managing Editor:** Wendy L. Osterman [wendyo@jco-online.com](mailto:wendyo@jco-online.com)

**Business Manager:** Lynn M. Bollinger [lynn@jco-online.com](mailto:lynn@jco-online.com)

**Circulation Manager:** Carol S. Varsos [carol@jco-online.com](mailto:carol@jco-online.com)

Subscription rates: INDIVIDUALS—U.S.A.: \$250 for one year, \$450 for two years; Canada: \$300 for one year, \$535 for two years; all other countries: \$360 for one year, \$625 for two years. INSTITUTIONS—U.S.A.: \$360 for one year, \$625 for two years; Canada: \$395 for one year, \$720 for two years; all other countries: \$450 for one year, \$815 for two years. STUDENTS—U.S.A.: \$125 for one year. SINGLE COPY—\$25 U.S.A.; \$35 all other countries. All orders must be accompanied by payment in full, in U.S. Funds drawn on a major U.S. bank only.

The material in each issue of JCO is protected by copyright. Instructions and fees for copying articles from JCO are available from the Copyright Clearance Center, (978) 750-8400; [www.copyright.com](http://www.copyright.com). For more information, e-mail: [info@jco-online.com](mailto:info@jco-online.com).

